

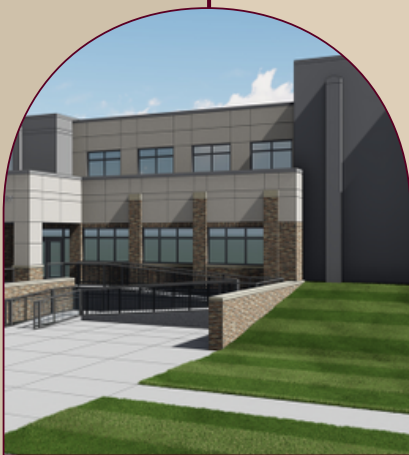


## Post Pandemic Facilities Plan

Prior to the pandemic, Norfolk Public Schools was ready to begin a bond initiative to address numerous facility projects across the district. These projects were needed due to increasing enrollment and safety concerns.

Although the bond was put on hold, we were able to complete several of the projects via QCPUF and ESSER II funding. We are recommending the completion of several additional projects via ESSER III, Depreciation, and Building Funds, where current safety and space issues exist.

We are also recommending that we wait to complete some of the projects that were initially proposed to address anticipated future growth. The pandemic has had an effect on our enrollment, making it prudent to complete a comprehensive post-pandemic enrollment projection study before moving forward with those growth-related projects. We believe that our enrollment will rebound after the pandemic and that enrollment growth will continue. However, an independent study should be conducted by RSP Associates to determine whether that belief is accurate.



LINCOLN  
MONTESSORI

### Initial Proposal for Lincoln Montessori Elementary

An addition to Lincoln Montessori is needed to address safety issues by providing improved entrance security and to address a lack of classroom space for the second track of Montessori classes.

**Estimated Cost: \$1,436,833**

**Revised Plan:** This project is currently under construction, utilizing QCPUF and Building Funds. Additions to the project include: renovation of all restrooms, replacement of hallway flooring throughout the building, replacing portable walls with permanent walls, and inflated costs due to the pandemic.

Anticipated completion date is July 2022.

**Revised Cost: \$1,821,674**



GRANT

### Initial Proposal for Grant Elementary

An addition to this school is needed to address ADA and safety issues by providing improved entrance security, an elevator, and new restrooms.

**Estimated Cost: \$827,926**

**Revised Plan:** This project is currently under construction, utilizing QCPUF and Building Funds. Additions to the project include: renovation of staff restrooms, ceiling and light enhancements in the hallways, and inflated costs due to the pandemic.

Anticipated completion date is July 2022.

**Revised Cost: \$1,270,600**



**BEL AIR**

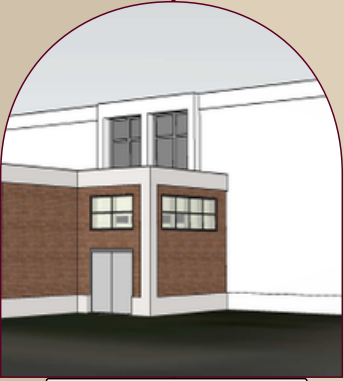
### Initial Proposal for Bel Air Elementary

An addition to Bel Air Elementary School is needed to address overcrowding, scheduling issues, a small multipurpose room (gym/cafeteria), and a lack of classroom space and parking. The second track at Lincoln Montessori Elementary School is anticipated to provide temporary relief to overcrowding at Bel Air Elementary School. Many of our elementary schools are approaching max capacity, and as our district continues to grow, Bel Air Elementary School's addition will be ready to accommodate future growth.

**Estimated Cost: \$7,249,162**

**Revised Plan:** We are recommending the use of ESSER III and Building Funds to complete part of this project, including the addition of a multi-purpose room, restrooms, and one classroom. Additional classroom space may be added at a later time, if determined necessary by a comprehensive enrollment projection study.

**Estimated Revised Cost: \$4,572,662**



**JUNIOR HIGH**

### Initial Proposal for Junior High

An addition to the Junior High is needed to address safety and ADA issues within the locker rooms and weight room.

**Estimated Cost: \$2,231,718**

**Revised Plan:** We are recommending the completion of this project, utilizing Building and Deprecation Funds

**Estimated Revised Cost: \$2,532,737**



**MIDDLE SCHOOL**

### Initial Proposal for Middle School

An addition to the Middle School is needed to address safety issues by providing improved entrance security and to address a lack of classroom, cafeteria, and gym space.

**Estimated Cost: \$8,308,145**

**Revised Plan:** We are recommending the completion of portions of this project, utilizing Building and Deprecation Funds once a Comprehensive Enrollment Projection Study has been completed to determine the scope of work. We are not recommending an additional gym at this time.

**Estimated Revised Cost: \$4,346,417**



**SENIOR HIGH**

### Initial Proposal for Senior High

An addition to Norfolk Senior High School is needed to address the lack of classroom space, an under-sized lunch and commons area, overcrowding in the orchestra room, lack of parking, and outdated Little Theatre space that does not meet current learning needs.

**Estimated Cost: \$5,915,793**

**Revised Plan:** We are recommending that this project is put on hold until a Comprehensive Enrollment Projection Study has been completed.

**Estimated Revised Cost: TBD**