

Jan 1, 2018 to Present

TECHNOLOGY SUPPORT



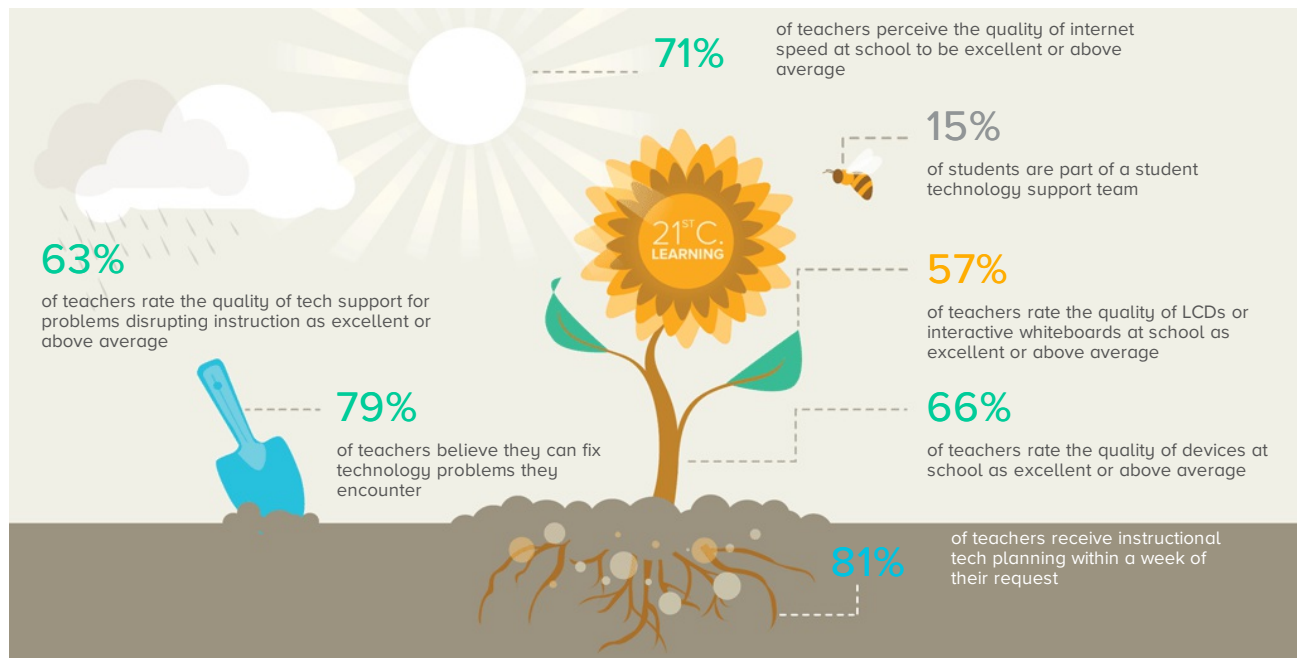
Seventy five percent of teachers at schools that use Clarity agree that technology use can enhance student learning and that learning is more engaging with the use of technology.

High quality, speedy, educative technology support is the catalyst for teachers trying new instructional techniques that employ technology. These environmental factors can overcome the lack of confidence that teachers have with technology, as expressed in a 2012 *LEAD Commission National* survey, in which 82 percent of teachers feel they have not received the necessary training to use technology to its fullest potential in the classroom.

However, adequate technology support can assuage teachers' trepidations. Teachers who perceive that the quality of technology support is high are more likely to try new lessons or learning activities with technology. This is because they feel confident that someone will be able to help them if a problem or disruption occurs. Seventy five percent of teachers at schools that use Clarity agree that technology use can enhance student learning and that learning is more engaging with the use of technology.

Furthermore, organizations can multiply teachers' access to technology support through the use of student technology support teams. An article in *Educational Leadership* notes that involving students in teaching technology to their teachers engages "students' innate interest in technology [and] enables teachers to contextualize technology."

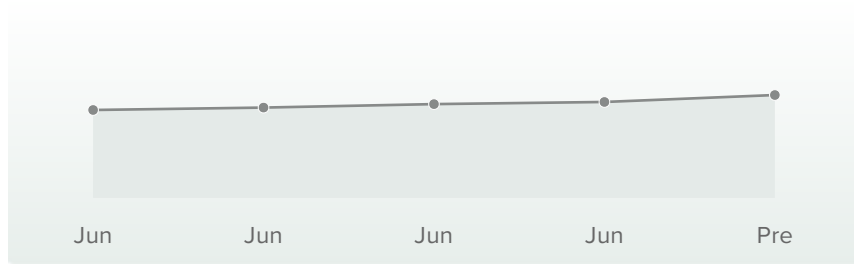
High quality, speedy technology support is a requisite environmental factor needed to cultivate classrooms that support 21st Century Learning.



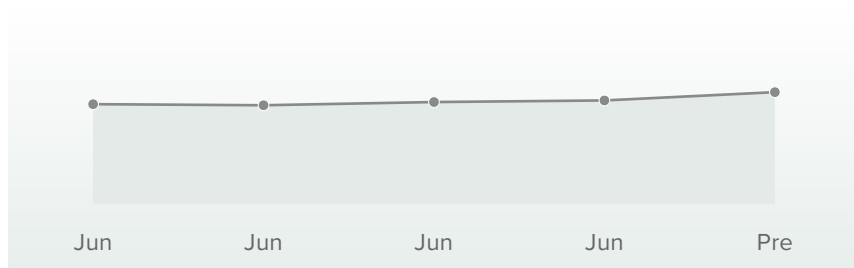
Contributing Factors

The factors that most contribute to the success of your organization include ...

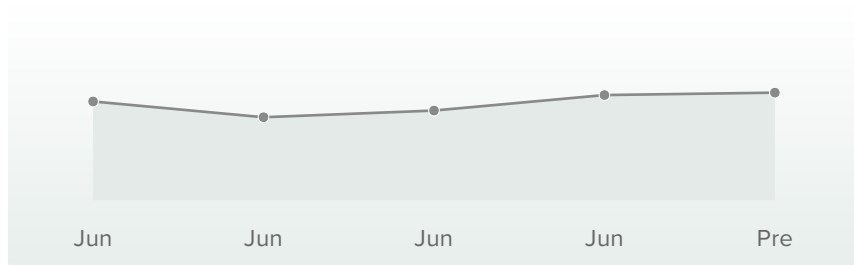
SPEED OF SUPPORT
ADVANCED



QUALITY OF SUPPORT
ADVANCED



QUALITY OF COMPUTERS AT SCHOOL
ADVANCED



CASE™ Score Legend

● Beginning
800-899

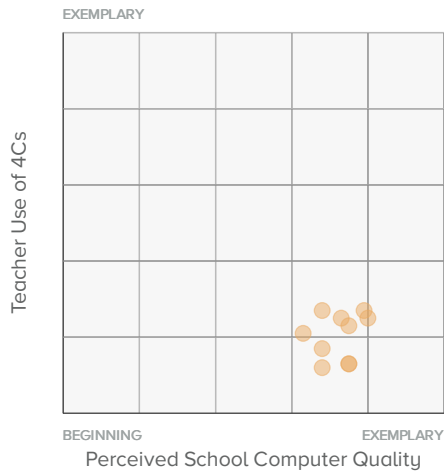
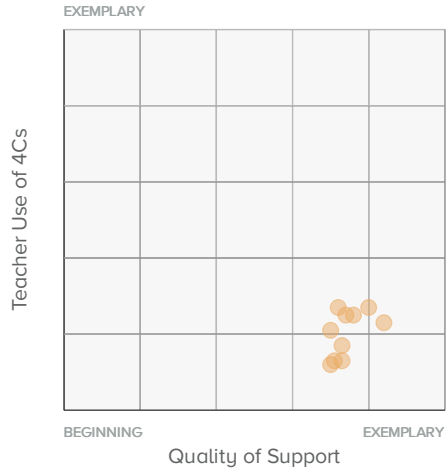
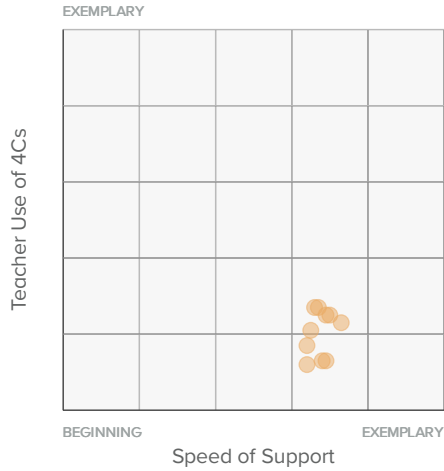
● Emerging
900-999

● Proficient
1000-1099

● Advanced
1100-1199

● Exemplary
1200-1300

Scatterplots



CASE™ Score Legend

- Beginning
800-899
- Emerging
900-999
- Proficient
1000-1099
- Advanced
1100-1199
- Exemplary
1200-1300

SCHOOL SCORECARD

Schools	Date Range	Speed of Support	Quality of Support	Computer Quality
Bel Air Elementary School	Apr 16, 2018 - Apr 30, 2018	●	●	●
Grant Elementary School	Apr 16, 2018 - Apr 30, 2018	●	●	●
Jefferson Elementary School	Apr 16, 2018 - Apr 30, 2018	●	●	●
Lincoln Elementary School	Apr 16, 2018 - Apr 30, 2018	●	●	●
Norfolk Jr High School	Apr 16, 2018 - Apr 30, 2018	●	●	●
Norfolk Middle School	Apr 16, 2018 - Apr 30, 2018	●	●	●
Norfolk Senior High School	Apr 16, 2018 - Apr 30, 2018	●	●	●
Washington Elementary School	Apr 16, 2018 - Apr 30, 2018	●	●	●
Westside Elementary School	Apr 16, 2018 - Apr 30, 2018	●	●	●
Woodland Park Elementary School	Apr 16, 2018 - Apr 30, 2018	●	●	●

CASE™ Score Legend

● Beginning
800-899

● Emerging
900-999

● Proficient
1000-1099

● Advanced
1100-1199

● Exemplary
1200-1300