

Jan 1, 2018 to Present

CURRICULUM



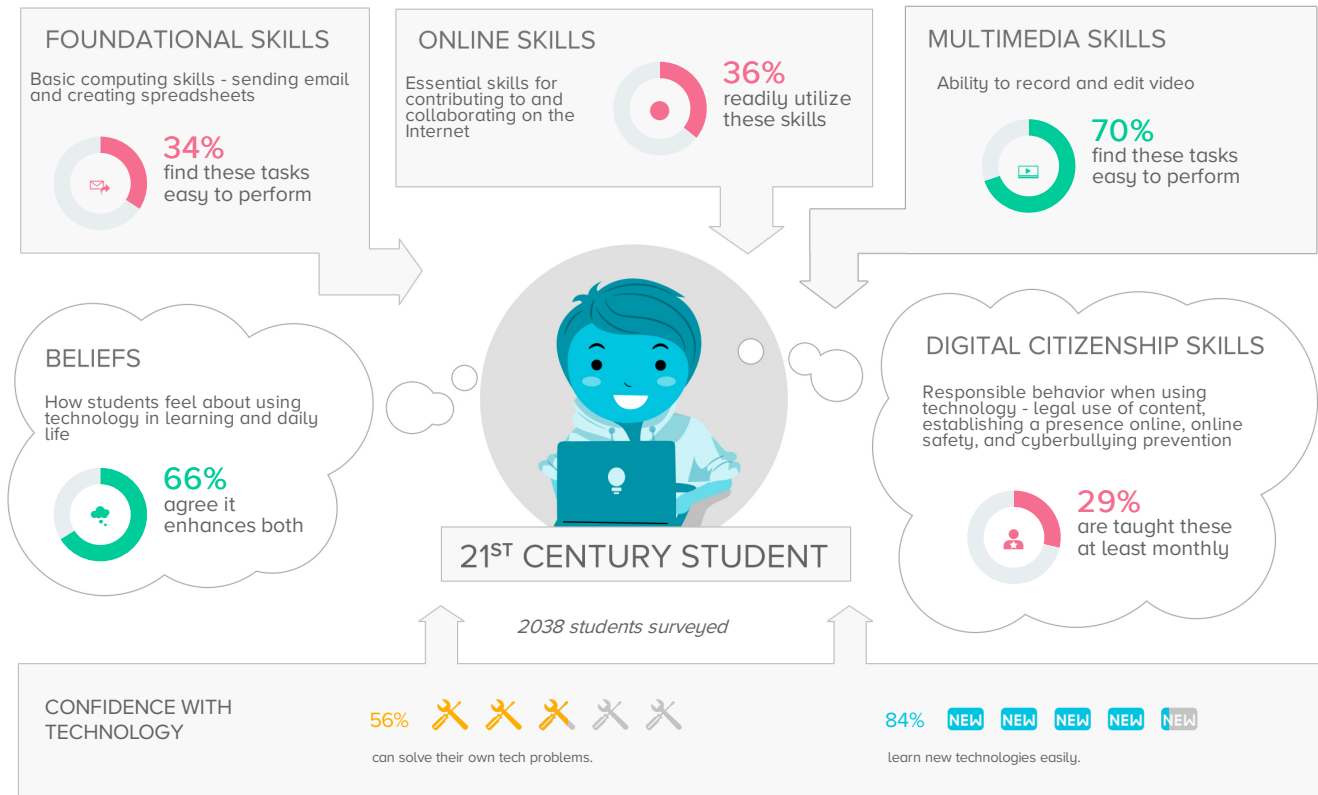
Although today's students are digital natives with many skills in social networking, the majority of them are not social learners with the ability to apply complex technology skills to everyday challenges.

Classrooms that prepare students for college and career seamlessly integrate technology into daily instruction in a way that intentionally scaffolds students' technology skills. Although today's students are digital natives with many skills in social networking, the majority of them are not social learners with the ability to apply complex technology skills to everyday challenges.

Furthermore, students' everyday experiences are seamlessly interwoven with digital devices and instant communication. In order to meet students "where they are," technology instruction must be infused in every subject area. Teachers are aware of this trend. According to a national *Pew* survey, 95% of students regularly use the Internet.

Given this, a modern curriculum must purposefully include incremental technology-infused skill acquisition. However, the design of every effective curriculum begins by considering the unique needs of the learners. Although students are comfortable tweeting and surfing the web, they still need support to use technology for productivity tasks such as creating spreadsheets and sending professional email.

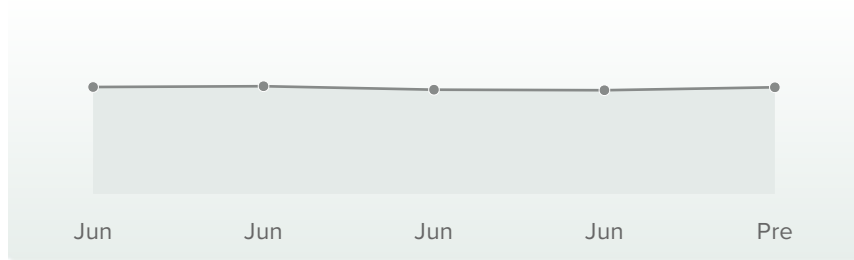
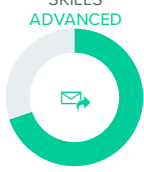
Being aware of students' skill profiles with technology can greatly inform the development of a cohesive, integrated curriculum that allows students to build the technology skills sets necessary for college and career.



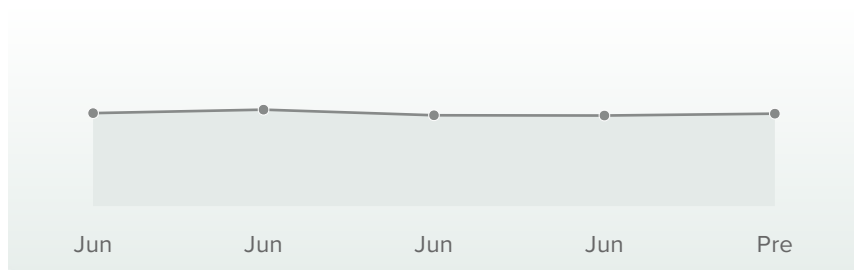
Contributing Factors

The factors that most contribute to the success of your organization include ...

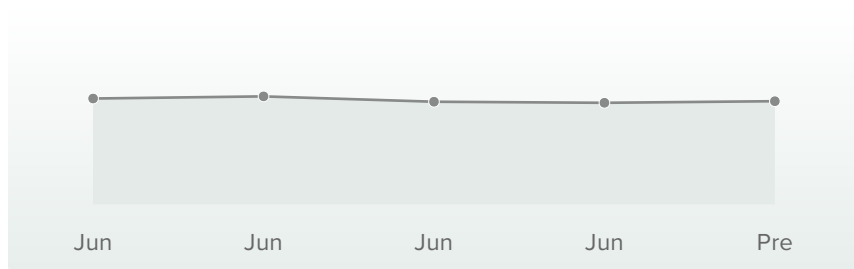
STUDENT FOUNDATIONAL SKILLS



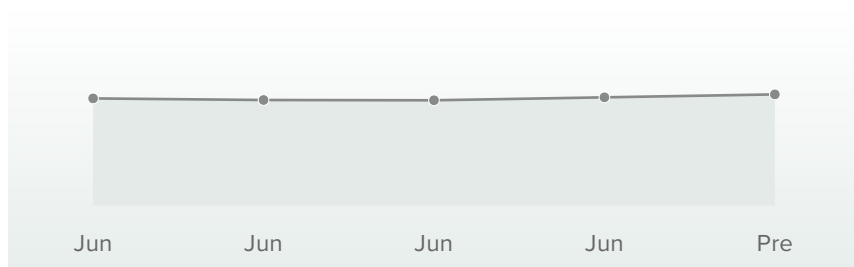
STUDENT ONLINE SKILLS



STUDENT MULTIMEDIA SKILLS



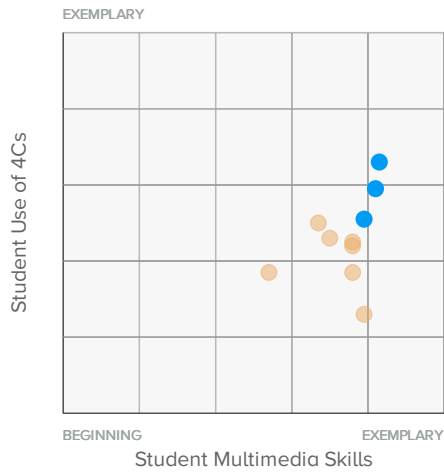
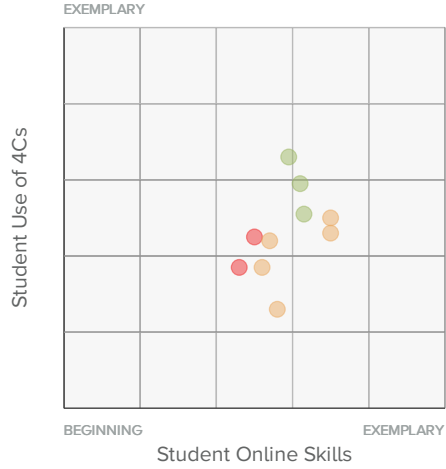
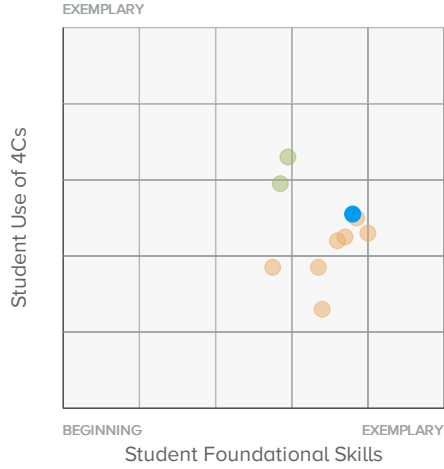
STUDENT BELIEFS



CASE™ Score Legend

- Beginning
800-899
- Emerging
900-999
- Proficient
1000-1099
- Advanced
1100-1199
- Exemplary
1200-1300

Scatterplots



CASE™ Score Legend

- Beginning
800-899
- Emerging
900-999
- Proficient
1000-1099
- Advanced
1100-1199
- Exemplary
1200-1300

SCHOOL SCORECARD

Schools	Date Range	Foundational Skills	Online Skills	Multimedia Skills	Beliefs
Bel Air Elementary School	Apr 16, 2018 - Apr 30, 2018	●	●	●	●
Grant Elementary School	Apr 16, 2018 - Apr 30, 2018	●	●	●	●
Jefferson Elementary School	Apr 16, 2018 - Apr 30, 2018	●	●	●	●
Lincoln Elementary School	Apr 16, 2018 - Apr 30, 2018	●	●	●	●
Norfolk Jr High School	Apr 16, 2018 - Apr 30, 2018	●	●	●	●
Norfolk Middle School	Apr 16, 2018 - Apr 30, 2018	●	●	●	●
Norfolk Senior High School	Apr 16, 2018 - Apr 30, 2018	●	●	●	●
Washington Elementary School	Apr 16, 2018 - Apr 30, 2018	●	●	●	●
Westside Elementary School	Apr 16, 2018 - Apr 30, 2018	●	●	●	●
Woodland Park Elementary School	Apr 16, 2018 - Apr 30, 2018	●	●	●	●

CASE™ Score Legend

● Beginning
800-899

● Emerging
900-999

● Proficient
1000-1099

● Advanced
1100-1199

● Exemplary
1200-1300